

Isco Strato-Link™ Satellite Telemetry Package

Strato-Link™ provides two-way communication between Isco 6712 series samplers (including Avalanche®) and Low-Earth-Orbiting (LEO) satellites, that you access via the internet.

The Strato-Link package includes satellite communicator hardware and a 12-month data access and transfer subscription. The subscription options let you choose a combination of parameters and logging intervals to match your application (see Ordering Information).

Web user interface

Sampler data are transmitted to one of more than 30 available LEO satellites at hourly intervals, then returned to a station on the Earth's surface. From there, data go to the Strato-Link web server where they can be viewed or retrieved at any time.

Data may be downloaded in CSV format for use with Isco Flowlink® software and spreadsheet applications.

System features

- ◆ view sampler and alarm status
- ◆ plot a graph of any stored parameter
- ◆ set up alarm destinations
- ◆ send sampler commands to enable/disable program, run program #1, 2, or 3, or 4 — or take a grab sample
- ◆ Password protection
- ◆ Firewalls and routine data backup
- ◆ 30-day data storage
- ◆ Comparable cost to cellular service
- ◆ Up to three sampler-generated alarms from the list below may be sent by text message or e-mail.
 - sampler errors
 - program enable/done
 - program A or B enable/done
 - conditions based on stored parameters

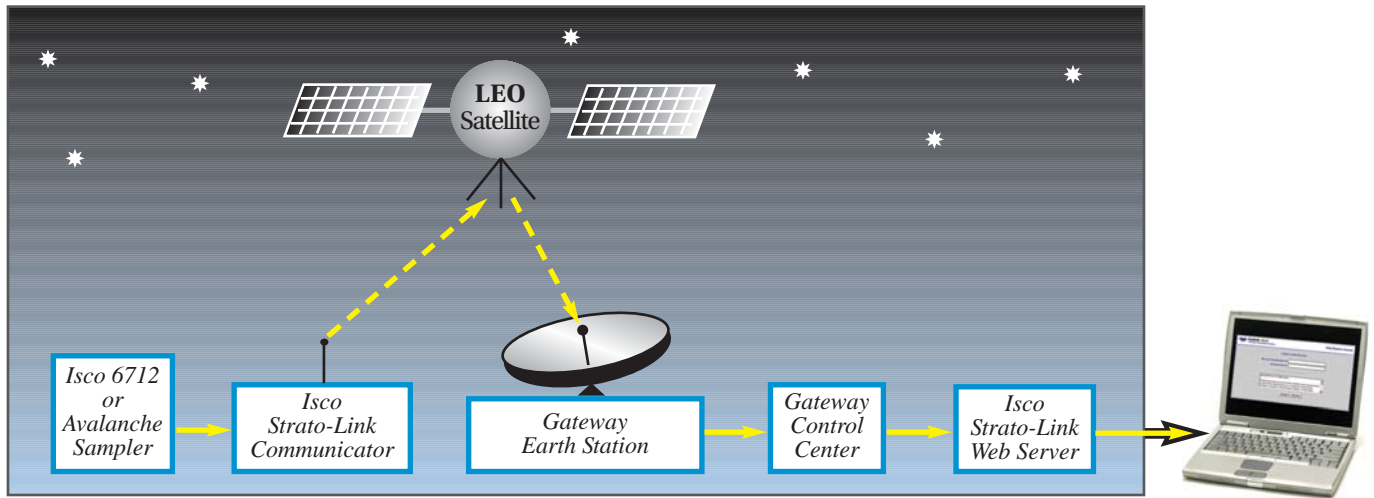


The compact satellite communicator is powered by an Isco 6712 or Avalanche® Sampler.

| | | | |
|-----------------|-----------------------------|---------|--------|
| Site: | Elm Street | Sensor: | Level |
| Measurements | Commands | Status | Alarms |
| Command | Status | | |
| Run #1 | Verified: 09/25/06 10:05 AM | | |
| Run #2 | | | |
| Run #3 | | | |
| Run #4 | | | |
| Enable Sampler | | | |
| Disable Sampler | | | |
| Take Sample | Verified: 10/12/06 06:05 AM | | |

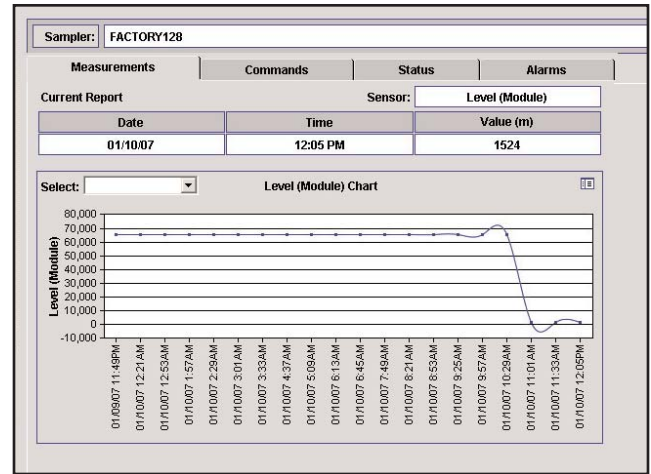
Strato-Link lets you send remote commands to your sampler right from your desk, using your subscriber web U.I.

Isco *Strato-Link*™ Operation



With Strato-Link, monitoring data is received in near real time on the web server. You can immediately view or download the data as CSV files to move into Isco Flowlink or spreadsheet applications. Browser-based access makes it easy to log in and view your data from virtually anywhere.

| Site: Elm Street | | Sensor: Level | |
|------------------------|----------|---------------|--------|
| Measurements | Commands | Status | Alarms |
| Current Report | | | |
| Date | Time | Value (ft) | |
| 10/17/06 | 12:00 PM | 0.69 | |
| Last 10 Reports | | | |
| Date | Time | Value (ft) | |
| 10/17/06 | 11:45 AM | 0.69 | |
| 10/17/06 | 11:30 AM | 0.68 | |
| 10/17/06 | 11:15 AM | 0.68 | |
| 10/17/06 | 11:00 AM | 0.70 | |
| 10/17/06 | 10:45 AM | 0.70 | |
| 10/17/06 | 10:30 AM | 0.70 | |
| 10/17/06 | 10:15 AM | 0.71 | |
| 10/17/06 | 10:00 AM | 0.71 | |
| 10/17/06 | 09:45 AM | 0.72 | |
| 10/17/06 | 09:30 AM | 0.70 | |



Specifications

| Isco Strato-Link | |
|----------------------------|---|
| Housing Dimensions (HxWxD) | 5.0 x 5.0 x 20 in (12.7 x 12.7 x 51 cm) |
| Weight | 8.7 lb (4 kg) |
| Power Supply | 12 V at 5 mA standby, 50 mA receiving enabled, 2 A transmitting enabled |
| Relative Humidity | 0 to 100% non-condensing |
| Operating Temperature | -40° to 140° F (-40° to 60° C) |

Ordering Information

Note: Strato-Link Telemetry Package available in USA only.

| Description | | | Part No. |
|--|------------------|--------------------|-------------|
| Strato-Link Telemetry Package includes all system hardware | | | 68-6710-735 |
| 12-Month Subscription Packages | | | |
| | Logging Interval | Maximum Parameters | |
| Package 1 | 15 min | 4 | 68-6710-736 |
| Package 2 | 15 min | 8 | 68-6710-737 |
| Package 3 | 5 min | 4 | 68-6710-738 |
| Package 4 | 5 min | 8 | 68-6710-739 |



Teledyne Isco, Inc.
 4700 Superior Street
 Lincoln, NE 68504 USA
 Phone: (402) 464-0231
 USA & Canada: (800) 228-4373
 Fax: (402) 465-3022
 e-mail: iscoinfo@teledyne.com
 Internet: www.isco.com